

Figure S2

Number of stage/tissue/cell-associated genes

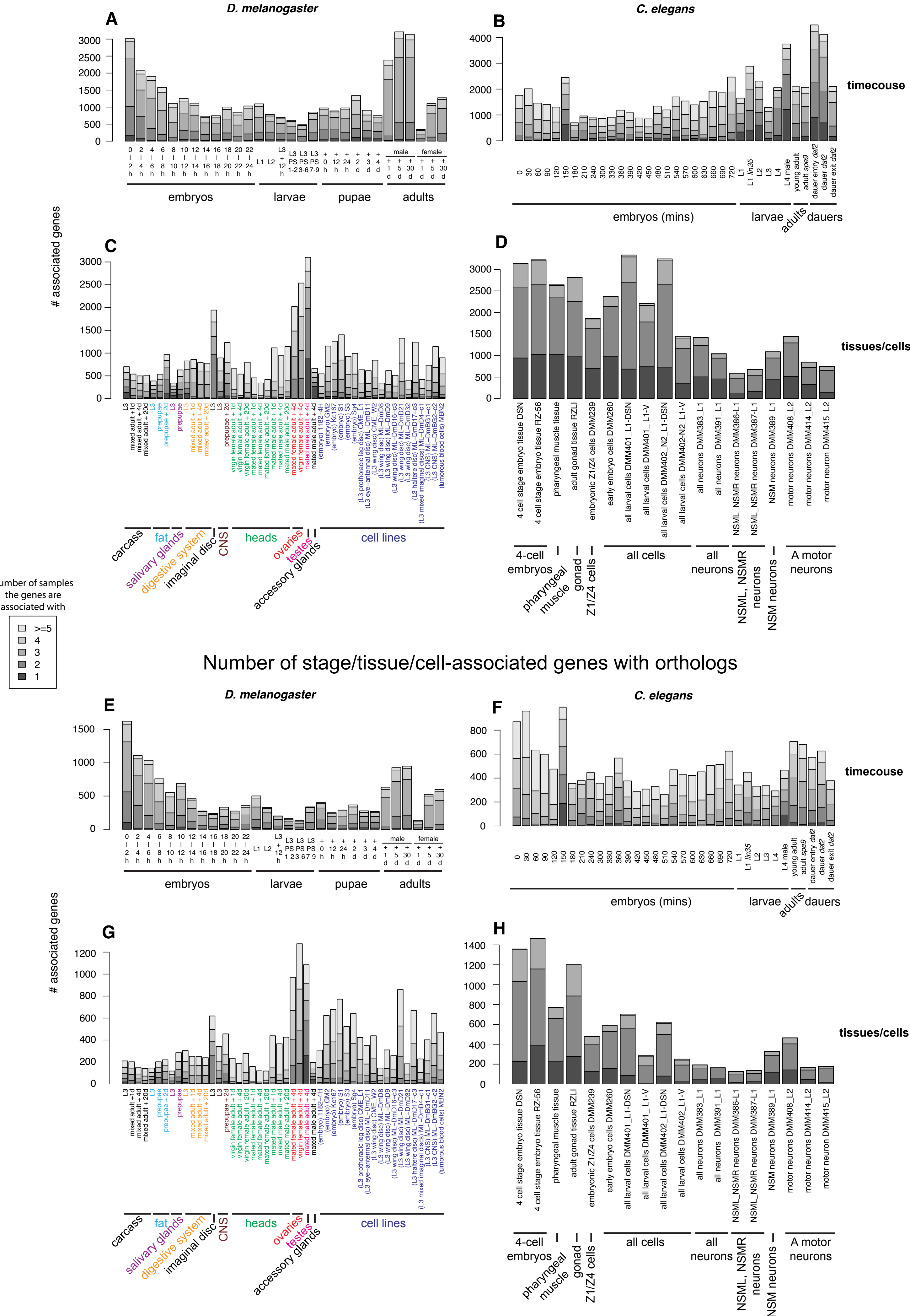


Figure S2. Distribution of the number of stage/tissue/cell-associated genes across different developmental stages, tissues and cells of *D. melanogaster* and *C. elegans*. The top panel (A-D) shows the number of associated genes (A) across all *D. melanogaster* developmental stages, (B) across all *C. elegans* developmental stages, (C) across all *D. melanogaster* tissues and cell lines, (D) across all *C. elegans* tissues and dissected cells. The bottom panel (E-G) shows the number of fly/worm associated genes that have orthologs in worm/fly (E) across all *D. melanogaster* developmental stages, (F) across all *C. elegans* developmental stages, (G) across all *D. melanogaster* tissues and cell lines, (H) across all *C. elegans* tissues and dissected cells. The gray scale shading of bars indicates the categorization of the associated genes based on the numbers of biological samples they are associated with. For detailed information on the stage, tissue, and cell labels, please refer to Table S2.